

Tip and Fold Seats

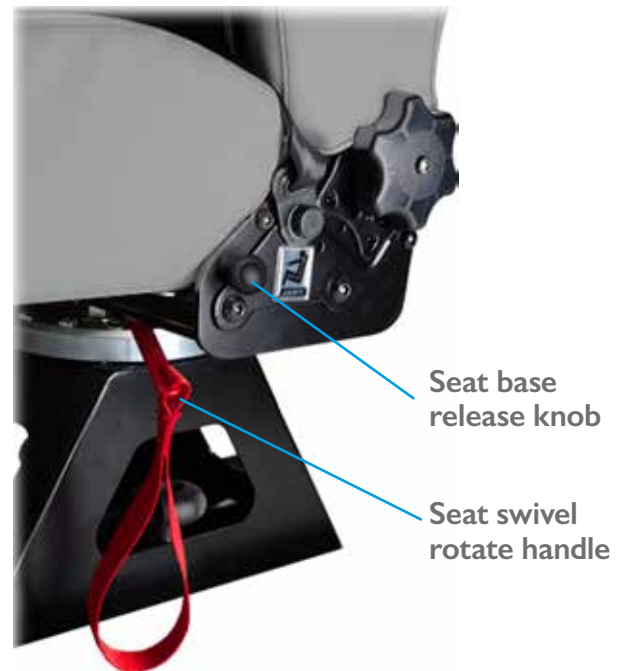
Your vehicle is fitted with a tip and fold seat that can be stowed or deployed to suit your requirements.

We fit a variety of tip and fold seats but the operating principle for all such seats is similar - the seat base folds up and the seat rotates to the side of the vehicle to save room. Below is a guide for how to use the most common type we fit.

Before the seat is stowed, the seat base must be folded up. This is achieved by pulling the release knob out and then lifting the front of the seat.

The seat is rotated by pulling the red release handle which releases the seat swivel. The seat can now be rotated through 90° where it will lock into position.

Deploying the seat is the reverse operation. **Always ensure the seat base and swivel are both locked positively into position before use.**



Important Safety Notes

Whether occupied or not, ensure all seats are locked in either the stowed or deployed positions on their swivels.

If the locking mechanism will not engage fully or there is another fault, do not allow anyone to travel in the seat and please contact us.

Do not attempt to travel in the seat in any other position than facing the front of the vehicle.

If you have any questions about your vehicle, please do not hesitate to call us on **01924 442386** or email customerservices@bristolstreetversa.com